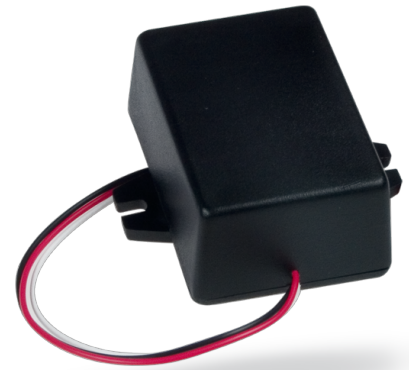


## Remote control for car

Code: JA-185J

This module is designed for car installation and to control devices (for example garage doors, parking entrance gates). It is powered by 12 V or 24 V from the car.



### Product description:

It can also be used for **panic alarm transmission** from a car to a home security system.

### Technical information:

<b>Power supply</b>	12V to 24 V $\pm$ 30%
<b>Consumption</b>	10/20 mA
<b>Communication band</b>	868.1 MHz, Jablotron protocol
<b>Maximum radio-frequency power (ERP)</b>	7 mW
<b>Communication range</b>	approx. 50 m (open area)
<b>Config. input reactions</b>	1 or 2 pulses of voltage supply
<b>Operational temperature range</b>	-10 °C to +40 °C
<b>Storage temperature range</b>	-40 °C to +85 °C
<b>Dimensions, weight</b>	84 x 53 x 25 mm, 120 g
<b>Can be operated according to</b>	ERC REC 70-03